



Blue Ridge Manor Storm Water Retrofit





Project Purpose:

- Clean up facility
- Decrease slopes
- Provide water quality

Blue Ridge Manor Storm Water Retrofit

Drainage Area - 36.3 Acres
Impervious Area - 9.74 Acres

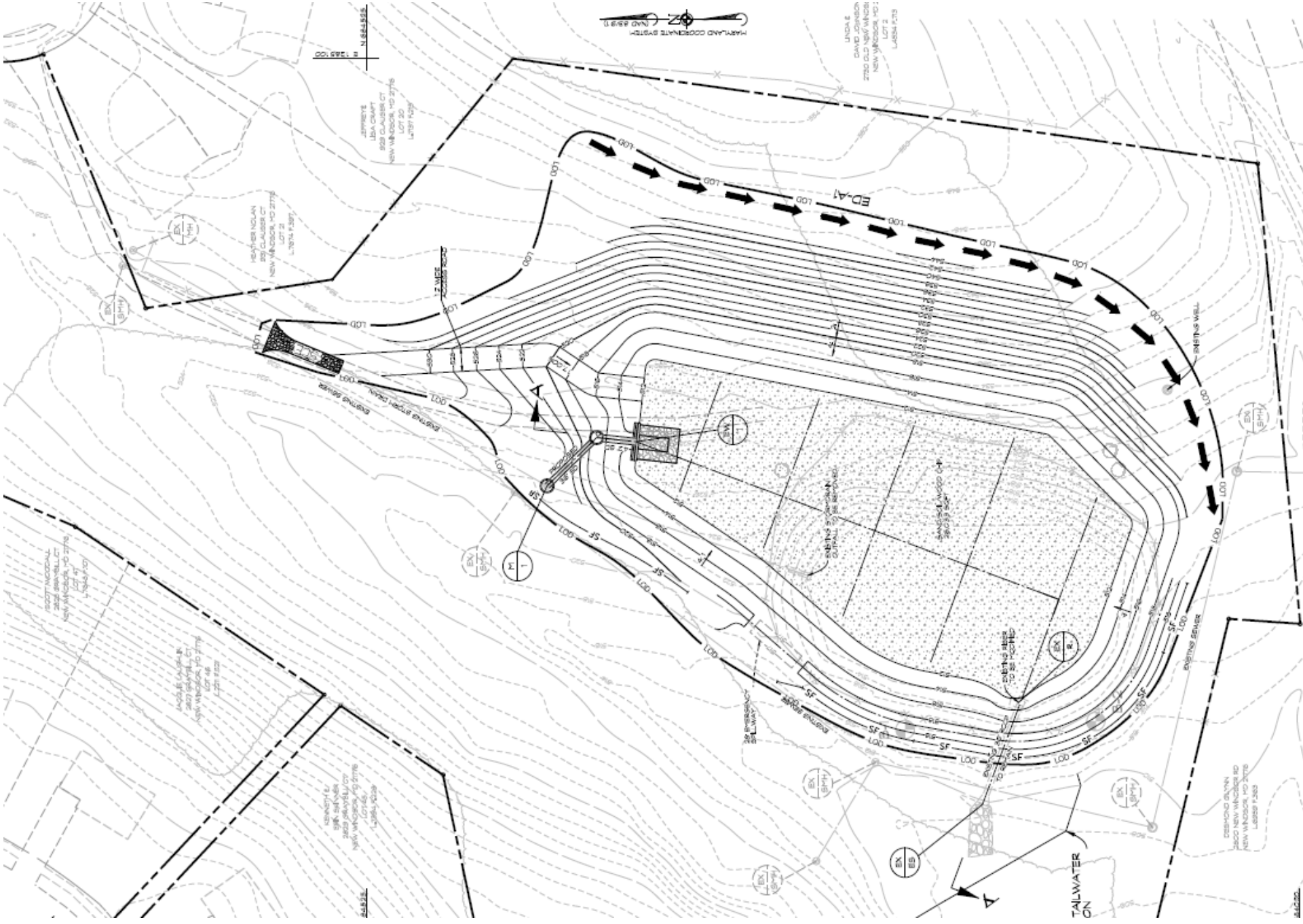


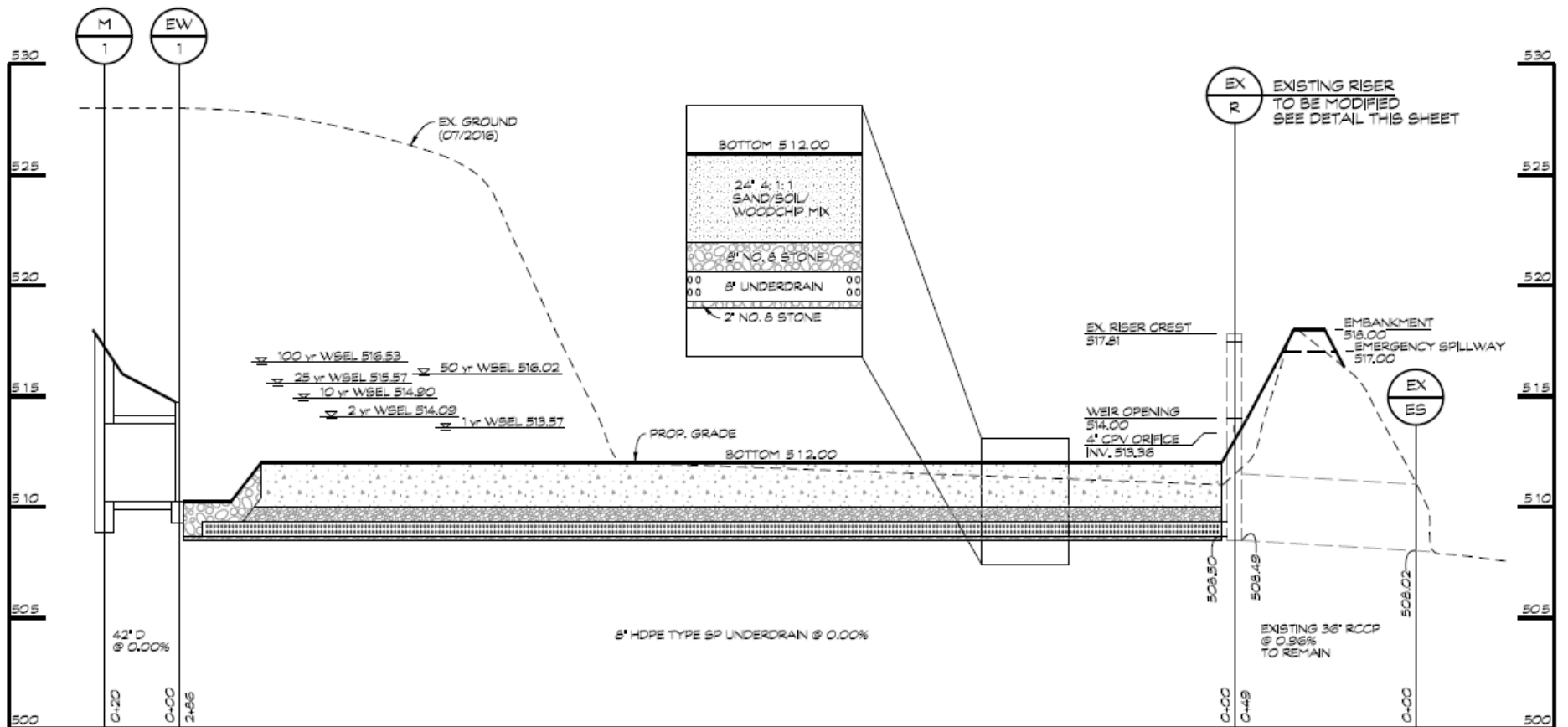













A photograph of a rural landscape. In the foreground, there is a stream with green algae or moss on its banks. The middle ground shows a grassy field with a wooden fence. In the background, there are bare trees and a hill under a blue sky.

Project Purpose:

- Clean up facility
- Decrease slopes
- Provide water quality

Project Information:

- 36 Acre Drainage Area
- 9.24 Acres Impervious
- Concept Design by CLSI
- Construction end of summer 2017
- \$250,000 in construction grant funds

Blue Ridge Manor Storm Water Retrofit

Diamond Hills – Prior to construction



03/31/2011

Diamond Hills – Just after construction



Diamond Hills – Spring following construction

